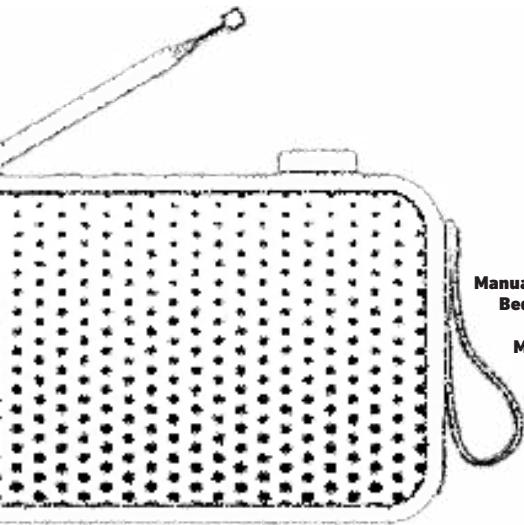


# aTUNE

DAB+ radio with Bluetooth speaker

**KREA  
FUNK  
EST.  
2011**



**Operation manual  
Brugermanual  
Handleiding  
Manual de instrucciones  
Bedienungshandbuch  
Manuale operativo  
Manual d'utilisation**

安全和保养说明

## **SAFETY AND MAINTENANCE INSTRUCTIONS**

**40**

SIKKERHEDS- OG VEDLIGEHOLDELSESINSTRUKTIONER

42

VEILIGHEIDS- EN ONDERHOUDSINSTRUCTIES

44

CONSIGNES DE SECURITE ET D'ENTRETIEN

46

SICHERHEITS- UND WARTUNGSANLEITUNG

48

ISTRUZIONI DI SICUREZZA E MANUTENZIONE

50

INSTRUCCIONES DE SEGURIDAD Y MANTENIMIENTO

52

安全和保养说明

54

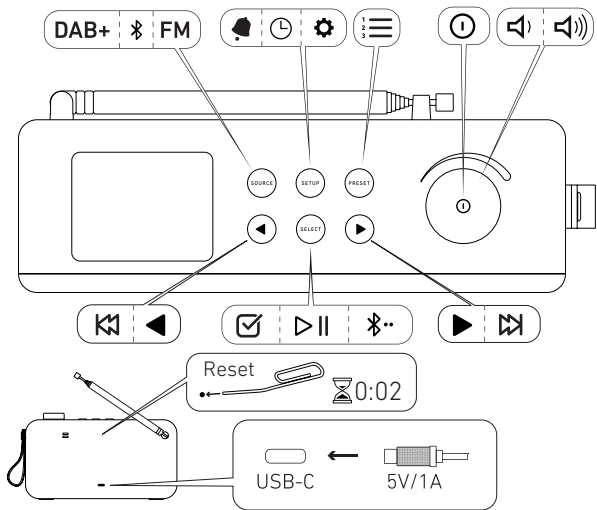


This product is in compliance with the essential requirements and other relevant provisions of Directive 2014/53/EU.

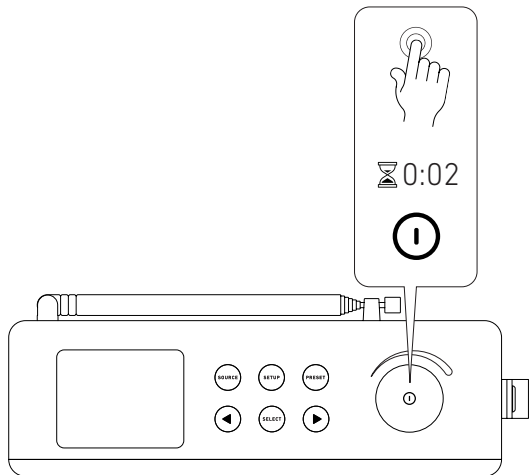
The declaration of conformity may be consulted at:

<https://kreafunk.com/pages/declaration-of-conformity>

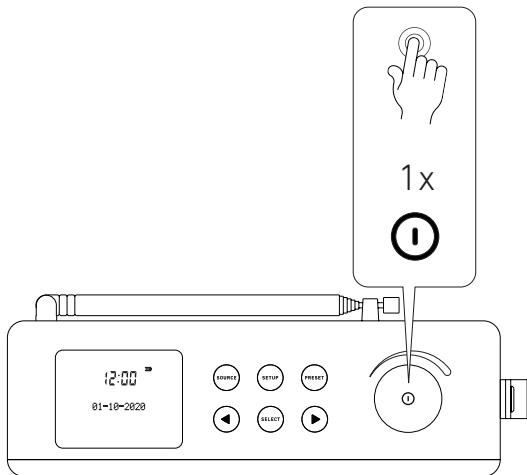
**OVERVIEW**/OVERSIGHT/OVERZICHT/VUE D'ENSEMBLE/ÜBERBLICK/  
PANORAMICA/VISIÓN GENERAL/概観



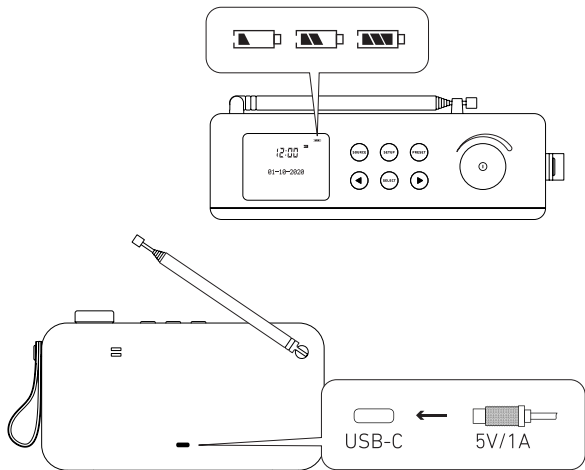
**ON/OFF**/TÆND SLUK/AAN UIT/ ALLUMÉ ÉTEINT /AN AUS/ACCESO  
SPENTO/ENCENDIDO APAGADO/开关



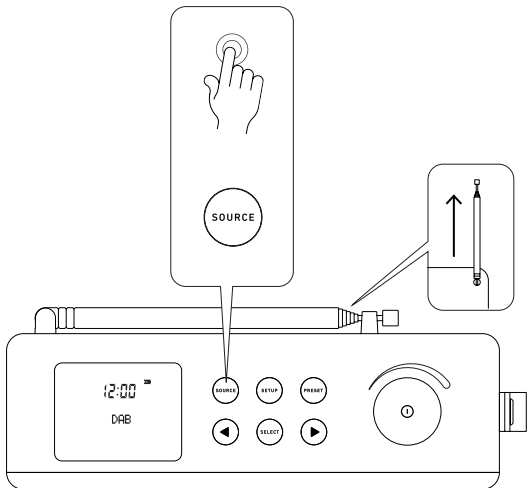
**ON STANDBY**/TÆND STANDBY/ STANDBY INSCHAKELEN/ALLUMER  
VEILLE/EINSCHALTEN STANDBY/ACCENDERE STANDBY/  
ENCENDER STANDBY/待机



**CHARGING**/OPLADNING/OPLADEN/MISE EN CHARGE/LADEN/CARICA/  
CARGA/充电中

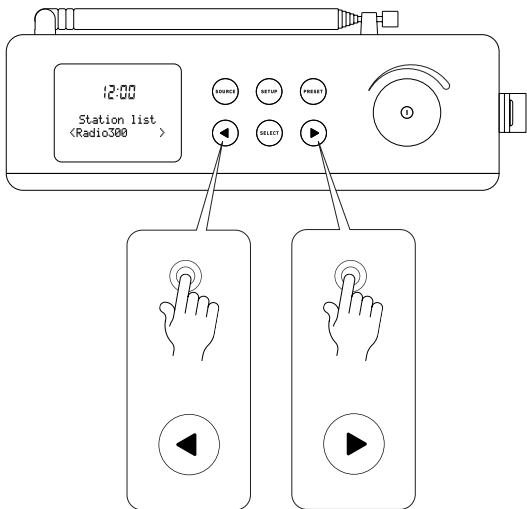


**LISTEN TO DAB**/LYT TIL DAB/ LUISTER NAAR DAB/ ÉCOUTER DAB/  
HÖRE DAB/ ASCOLTA DAB/ESCUCHA A DAB/收听数字广播



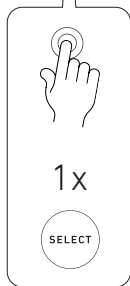
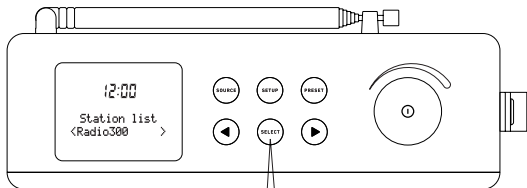
**CHANGE STATION**/SKIFT STATION/ VAN STATION WISSELEN/  
CHANGER DE STATION/STATION WECHSELN/CAMBIARE STAZIONE /  
CAMBIAR DE ESTACIÓN/换台

**STEP 1**



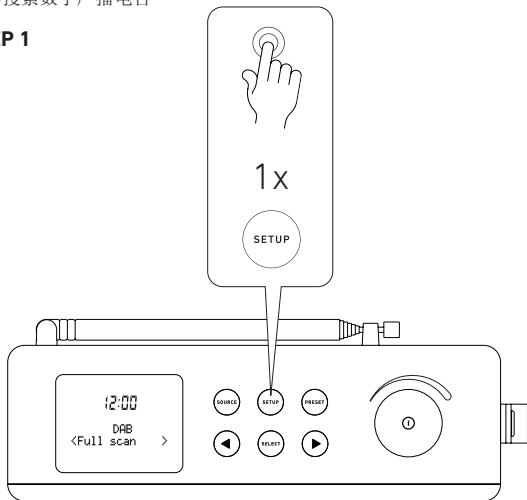


**STEP 2**

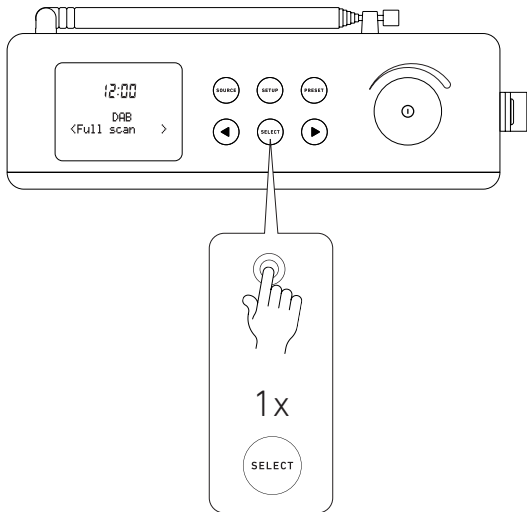


**MANUAL SCAN DAB STATIONS**/MANUEL SCANNING AF DAB-STATIONER/HANDMATIG ZOEKEN NAAR DAB-STATIONS/STATIONS DAB À BALAYAGE MANUEL/MANUELLE SUCHE NACH DAB-SENDERN/STAZIONI DAB A SCANSIONE MANUALE/ESCANEIO MANUAL DE ESTACIONES DAB/  
手动搜索数字广播电台

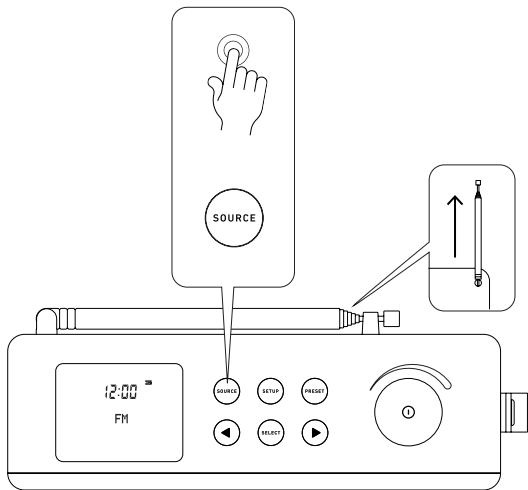
**STEP 1**



**STEP 2**

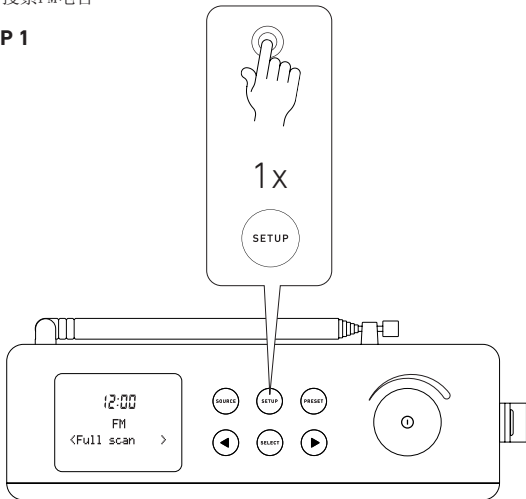


**LISTEN TO FM**/LYT TIL FM/LUISTER NAAR FM/ÉCOUTER FM/HÖRE FM/  
ASCOLTA FM/ESCUCHA A FM/收听FM 广播

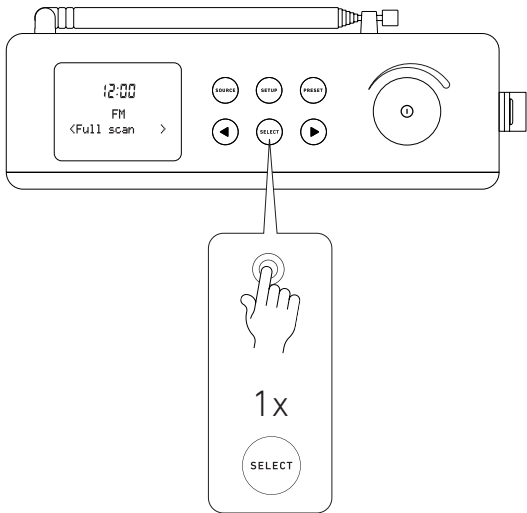


**MANUAL SCAN FM STATIONS**/MANUEL SCANNING AF FM-STATIONER/HANDMATIG ZOEKEN NAAR FM-STATIONS/STATIONS FM À BALAYAGE MANUEL/MANUELLE SUCHE NACH FM-SENDERN/STAZIONI FM A SCANSIONE MANUALE/ESCAÑEO MANUAL DE ESTACIONES FM/  
手动搜索FM电台

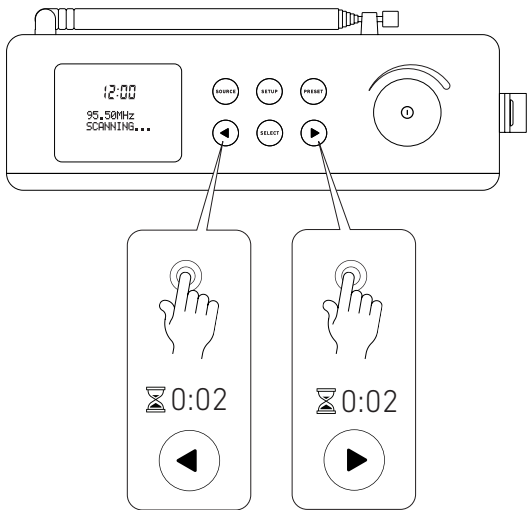
**STEP 1**



**STEP 2**

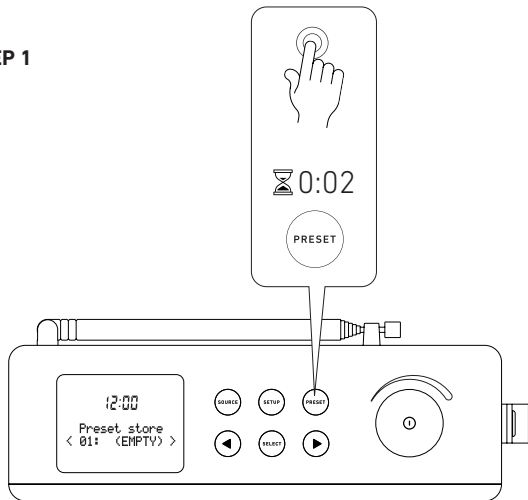


**CHANGE STATION**/SKIFT STATION/ VAN STATION WISSELEN/  
CHANGER DE STATION/STATION WECHSELN/CAMBIARE STAZIONE /  
CAMBIAR DE ESTACIÓN/换台



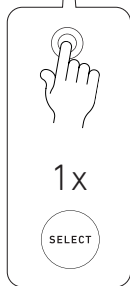
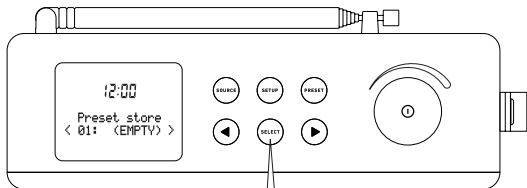
**STORE PRESET**/GEM FORUDINDSTILLING/ VOORINSTELLING  
OPSLAAN/MÉMORISER LE PRÉRÉGLAGE/VOREINSTELLUNG SPEICHERN/  
MEMORIZZA PRESET/TIENDA PREESTABLECIDA/存储预设

**STEP 1**



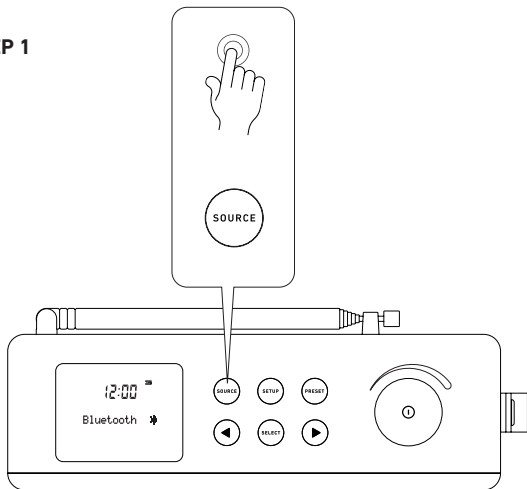


**STEP 2**

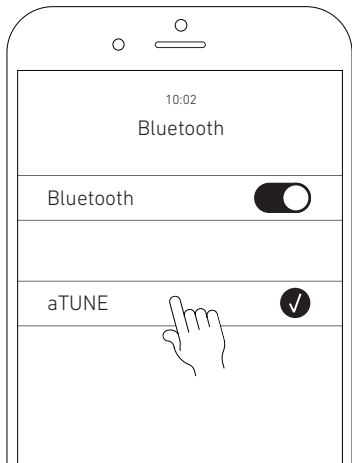


**LISTEN VIA BLUETOOTH**/LYT VIA BLUETOOTH/LUISTER VIA  
BLUETOOTH/ÉCOUTER VIA BLUETOOTH/ÜBER BLUETOOTH HÖREN/ASCOLTA  
VIA BLUETOOTH/ESCUCHAR A TRAVÉS DE BLUETOOTH/通过蓝牙收听

**STEP 1**

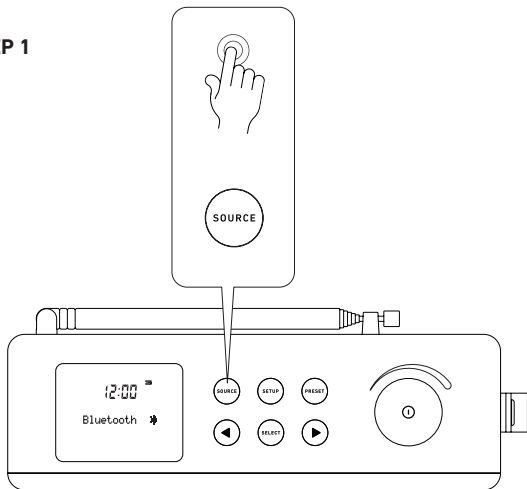


## STEP 2

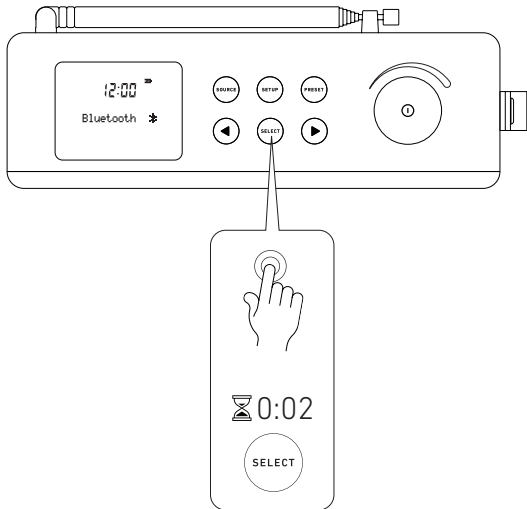


**MANUAL BLUETOOTH PAIRING**/MANUEL BLUETOOTH-PARRING/  
HANDMATIGE BLUETOOTH-KOPPELING/COUPLAGE BLUETOOTH MANUEL/  
MANUELLE BLUETOOTH-KOPPLUNG/ACCOPIAMENTO BLUETOOTH  
MANUALE/EMPAREJAMIENTO MANUAL DE BLUETOOTH/手动蓝牙配对

**STEP 1**

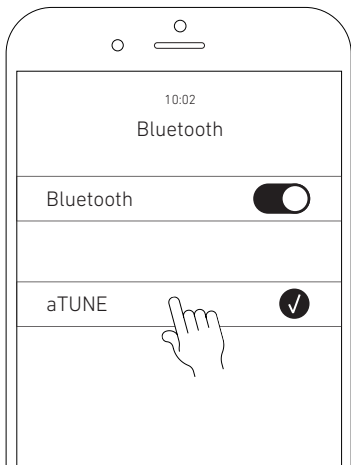


**STEP 2**

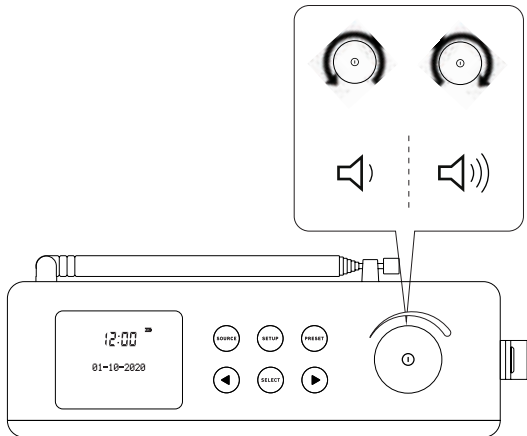


**LISTEN VIA BLUETOOTH**/LYT VIA BLUETOOTH/LUISTER VIA  
BLUETOOTH/ÉCOUTER VIA BLUETOOTH/ÜBER BLUETOOTH HÖREN/ASCOLTA  
VIA BLUETOOTH/ESCUCHAR A TRAVÉS DE BLUETOOTH/通过蓝牙收听

**STEP 3**

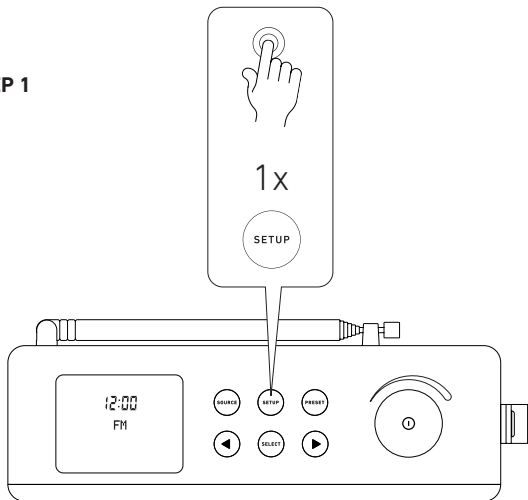


**CHANGE VOLUME** / ÆNDRE VOLUME / VOLUME WIJZIGEN / CHANGER DE VOLUME / VOLUMEN ÄNDERN / CAMBIA VOLUME / CAMBIAR VOLUMEN / 改变音量



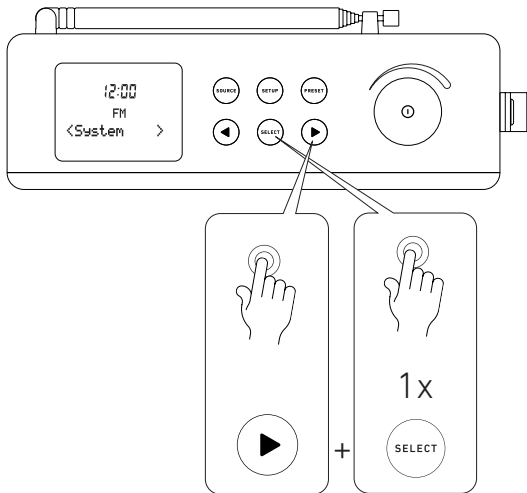
**SET ALARM**/INDSTIL ALARM/WEKKER INSTELLEN/RÉGLER L'ALARME/  
WECKER STELLEN/IMPOSTA SVEGLIA/AJUSTAR ALARMA/设置闹钟

**STEP 1**

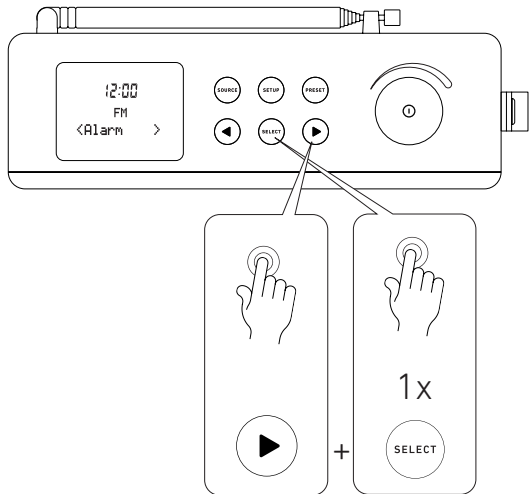




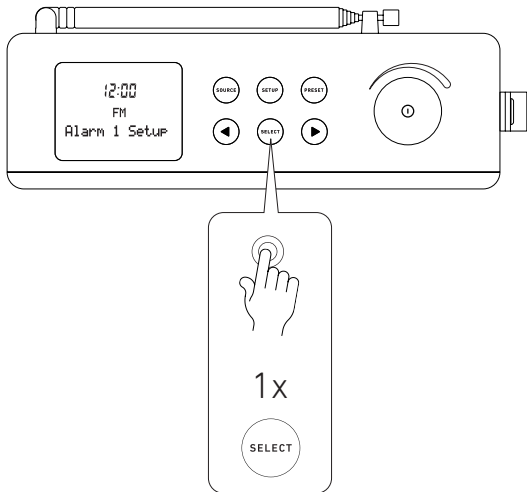
## STEP 2



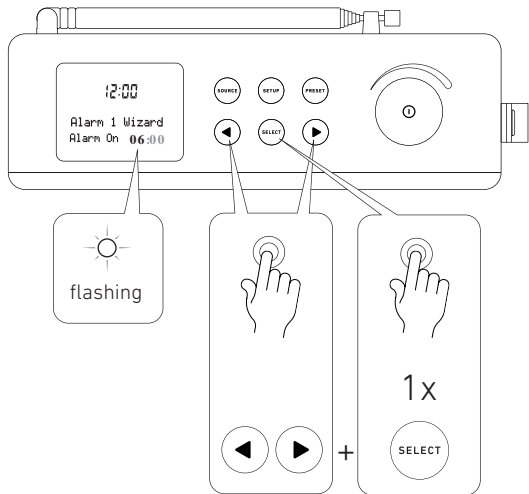
### STEP 3



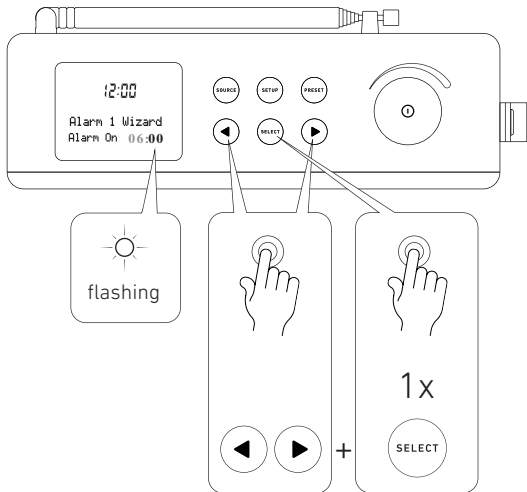
**STEP 4**



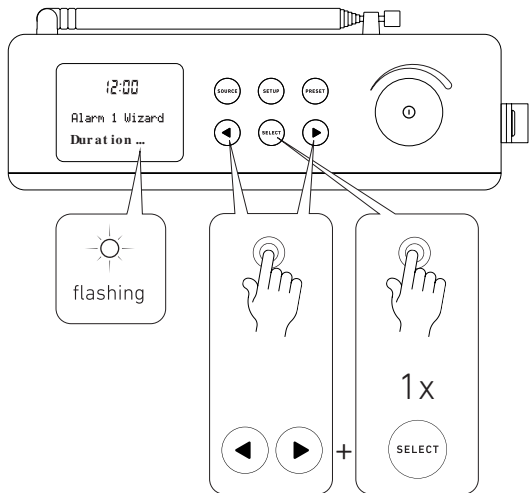
## STEP 5



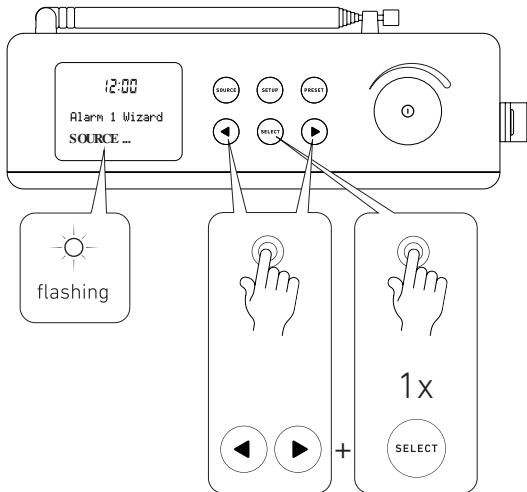
## STEP 6



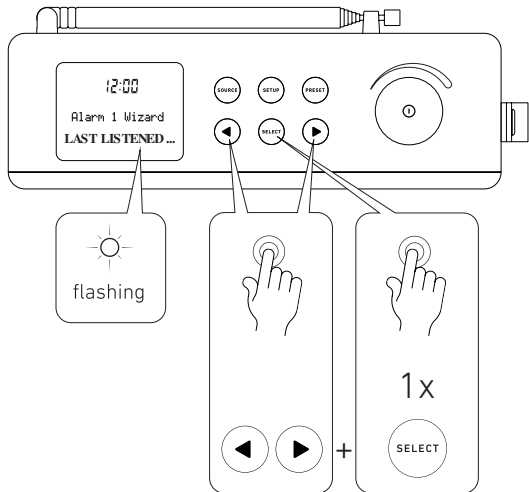
## STEP 7



## STEP 8

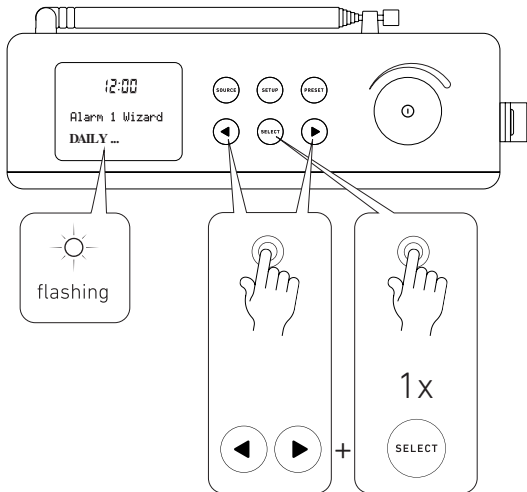


## STEP 9

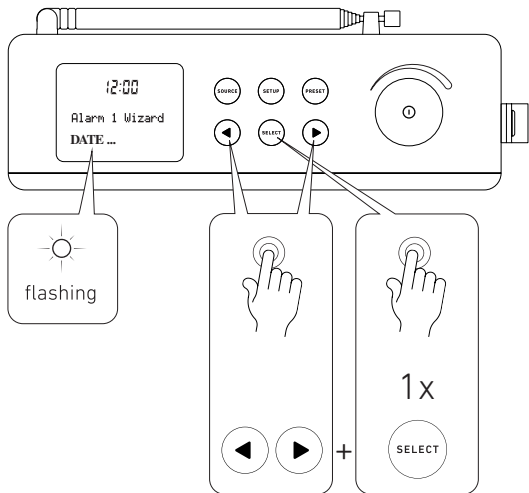




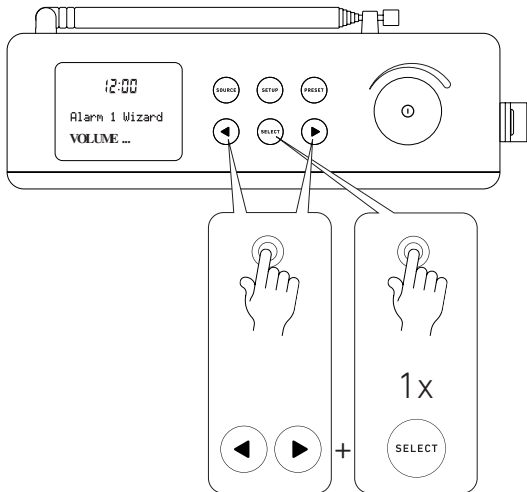
**STEP 10**



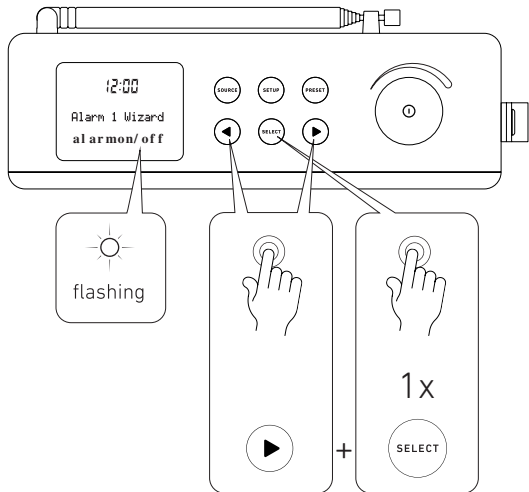
## STEP 11



**STEP 12**



## STEP 13



**TECHNICAL SPECIFICATIONS/**TEKNISKE SPECIFIKATIONER/  
TECHNISCHE SPECIFICATIES/SPÉCIFICATIONS TECHNIQUES/TECHNISCHE  
SPEZIFIKATIONEN/ SPECIFICHE TECNICHE/ESPECIFICACIONES TÉCNICAS/  
技术规格

- Dimensions: 109\*195\*70 mm
- Weight: 670g
- Speaker: Ø45 mm 4Ω 10W
- Playing time: up to 30 hours
- Charging time: 3-4 hours (USB)
- DAB+, FM and Bluetooth
- Alarm
- Including USB to USB-C charging cable
- Build in Lithium battery with 7V, 4400mAh
- Frequency band: 2402–2480 MHz
- Maximal radio frequency effect: <3 dBm
- Bluetooth: version 5.0
- Range: up to 10 m
- Input power: 5V / 1A
- Dust and water-resistant (IP44)

## **FCC STATEMENT**

**This device complies with part 15 of the FCC rules. Operation is subject to the following two conditions:**

1. This device may not cause harmful interference and
2. This device must accept any interference received, including interference that may cause undesired operation.

**Important:** Changes or modifications to this product not authorized could void the FCC compliance and negate your authority to operate the product.

**NOTE:** This equipment has been tested and found to comply with the limits for a Class B digital device, pursuant to part 15 of the FCC Rules. These limits for a signed to provide reasonable protection against harmful interference in a residential installation. This equipment generates uses and can radiate radio frequency energy and, if not installed and used in accordance with the instructions, may cause harmful interference to radio communications.

However, there is no guarantee that interference will not occur in a particular installation. If this equipment does cause harmful interference to radio or television reception, which can be determined by turning the equipment off and on, the user is encouraged to try to correct the interference by one or more of the following measures:

- Reorient or relocate the receiving antenna.
- Increase the separation between the equipment and receiver.
- Connect the equipment into an outlet on a circuit different from that to which the receiver is connected.
- Consult the dealer or an experienced radio / TV technician for help.

**FCC Radiation Exposure Statement:** This equipment complies with FCC radiation exposure limits set forth for an uncontrolled environment. This equipment should be installed and operated with minimum distance 20cm between the radiator & your body.

**FCC ID:** 2ACVC-ATUNE

## **SAFETY AND MAINTENANCE INSTRUCTIONS**

1. Please read this operation manual carefully before use.
2. The safety and maintenance instructions in this operation manual should be retained for future reference and must be followed at all times.
3. Keep the product away from heat sources such as radiators, heaters or other appliances that produce heat.
4. Place the speakers in a stable position to avoid fall and cause damage or personal injury.
5. Do not expose the product to direct sunlight for longer periods. High temperatures may shorten the life of the product, destroy the battery and distort certain plastic parts.
6. Do not expose the product to extreme cold as it may damage the internal circuit board.
7. Rechargeable batteries have a limited number of charge cycles. Battery life and number of charge cycles varies by use and settings.
8. Avoid liquids getting into the product.
9. Before wiping with a dry cloth to clean the speakers, set the power switch to the off position and unplug the power cord from the power outlet.
10. Do not throw with or stamp on the product. This may damage the internal circuit board.
11. Do not try to disassemble the product. This must only be done by a professional.
12. Do not use concentrated chemical products or detergent to clean the product.



13. Keep the surface away from sharp things, as these may cause damage to the plastic parts.
14. Use 5V / 1A power supplies only. The connection of power supplies with higher voltage may lead to severe damage.
15. Do not arbitrarily discard or place the lithium battery near fire or intense heat in order to avoid a risk of explosion.

If you do experience any problems with your product please contact the retailer you purchased the product from. The retailer will provide you with guidance and if that does not solve the problem, the retailer will handle the claim directly with KREAFUNK.

## **SICHERHEITS- UND WARTUNGSANLEITUNG**

1. Bitte lesen Sie diese Bedienungsanleitung vor dem Gebrauch sorgfältig durch.
2. Die Sicherheits- und Wartungsanweisungen dieser Bedienungsanleitung sollten für zukünftige Bezugnahme aufbewahrt werden und müssen jederzeit befolgt werden.
3. Halten Sie das Produkt von Wärmequellen wie Heizkörpern, Heizgeräten oder anderen Wärme erzeugenden Geräten fern.
4. Stellen Sie sicher, dass die Lautsprecher in einer stabilen Position aufgestellt sind, um ein Herunterfallen und damit verbundene Schäden oder Verletzungen zu vermeiden.
5. Setzen Sie das Produkt nicht für längere Zeit direktem Sonnenlicht aus. Hohe Temperaturen können die Lebensdauer des Produkts verkürzen, zerstören die Batterie und verformen bestimmte Kunststoffteile.
6. Setzen Sie das Produkt nicht extremer Kälte aus, da dies die interne Leiterplatte beschädigen kann.
7. Wiederaufladbare Batterien haben begrenzte Aufladezyklen. Die Lebensdauer der Batterien und die Anzahl der Ladezyklen hängt von der Verwendung und den Einstellungen ab.
8. Vermeiden Sie, dass Flüssigkeiten in das Produkt gelangen.
9. Bevor Sie die Lautsprecher mit einem trockenen Tuch reinigen, schalten Sie den Ein-/Ausschalter aus und ziehen Sie das Netzkabel aus der Steckdose.
10. Nicht das Produkt werfen oder auf das Produkt draufstellen. Dies könnte den internen Schaltkreis beschädigen.
11. Versuchen Sie nicht, das Produkt zu zerlegen. Dies darf nur von einem Fachmann durchgeführt werden.

12. Verwenden Sie keine konzentrierten chemischen Produkte oder Reinigungsmittel, um das Produkt zu reinigen.
13. Halten Sie die Oberfläche von scharfen Gegenständen fern, da diese das Kunststoff beschädigen können.
14. Verwenden Sie nur 5 V/1 A-Netzteile. Der Anschluss von Netzteilen mit höherer Spannung kann zu folgenschweren Schäden führen.
15. Werfen oder legen Sie die Lithiumbatterie nicht willkürlich in die Nähe von Feuer oder starker Hitze, um eine Explosion zu vermeiden.

Wenn Sie Probleme mit Ihrem Produkt haben, wenden Sie sich bitte an den Händler, bei dem Sie den Produkt gekauft haben. Der Händler wird Sie beraten und wenn dies das Problem nicht löst, wird der Händler die Reklamation direkt mit KREAFUNK abwickeln.

# KREAFUNK

KREAFUNK ApS  
Klamsagervej 35A, st.  
8230 Aabyhoej  
Denmark  
[www.kreafunk.dk](http://www.kreafunk.dk)  
[info@kreafunk.dk](mailto:info@kreafunk.dk)  
+45 96 99 00 20