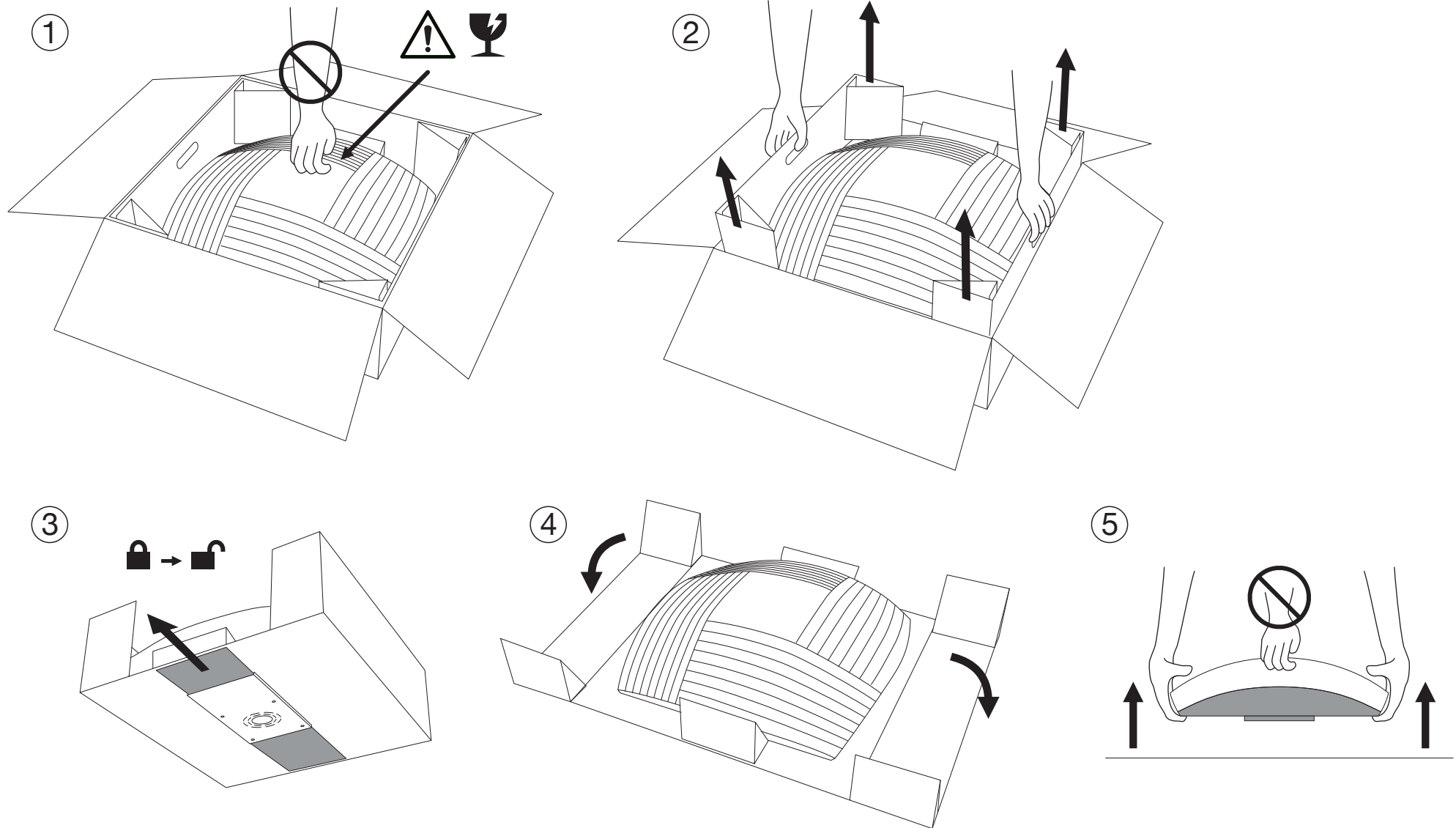


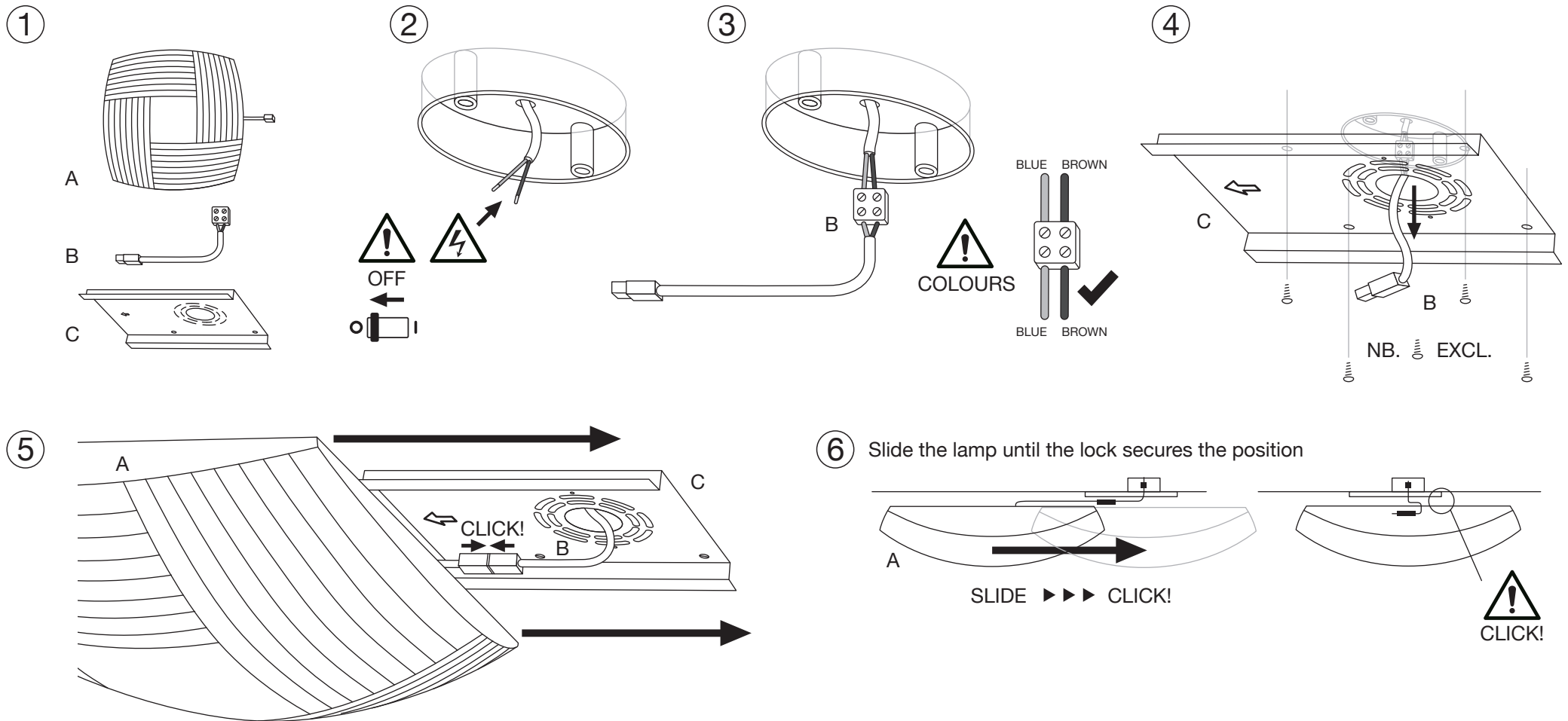
Kuulto 9100 | Kuulto Small 9101 | Opening Instructions


Secto
DESIGN



Kuulto 9100 | Kuulto Small 9101 | Instructions


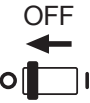

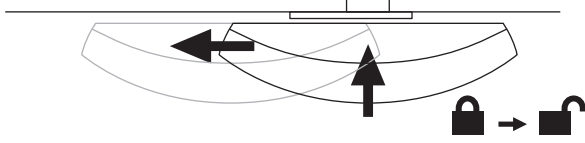
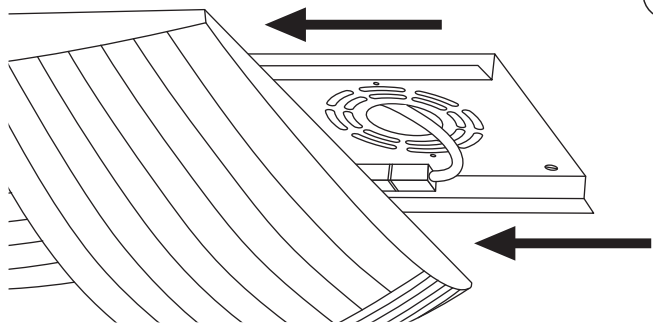
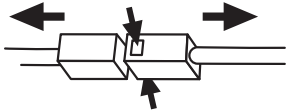
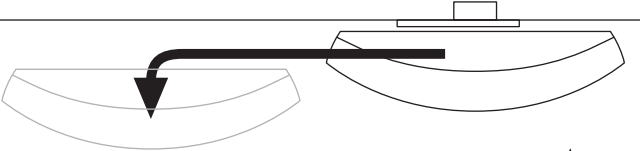

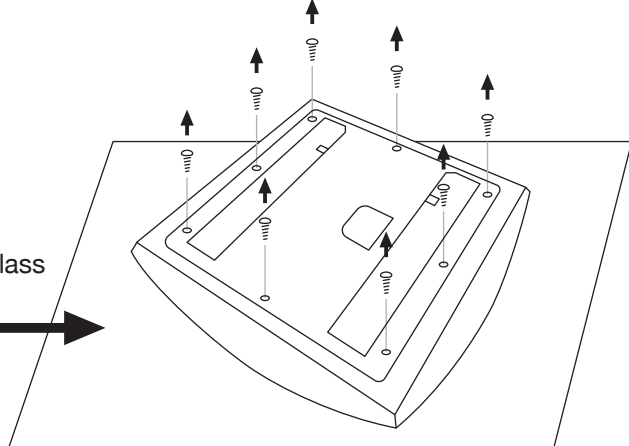


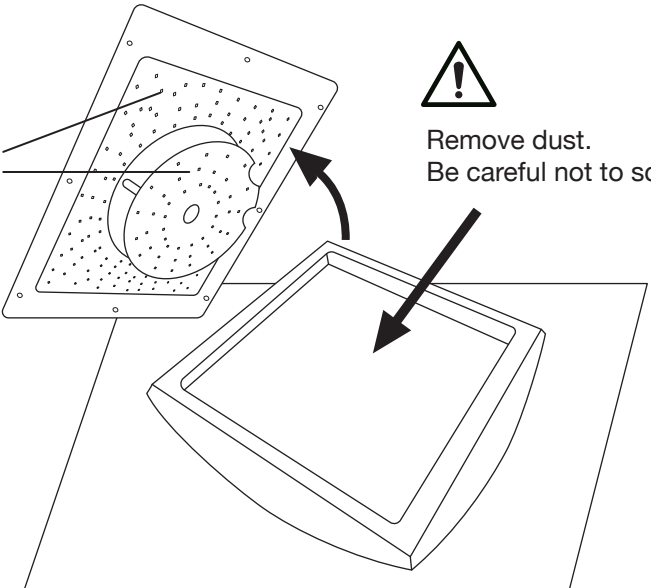
Secto
DESIGN




 The cable and the built-in LEDs can only be replaced by the manufacturer.

Kuulto 9100 | Kuulto Small 9101 | Cleaning instructions

Secto
DESIGN

- 
OFF


The lamp should still be supported by the rail until the step 4.
- Lift the lamp and unlock it to slide

- Slide the lamp until the connector becomes accessible

- Disconnect the connector

- Slide the lamp and remove from the rail

- 
Protect the acrylic glass and wooden part with soft material

- 
LED

Remove dust. Be careful not to scratch.


 The cable and the built-in LEDs can only be replaced by the manufacturer.